


Ohio EPA Report on Activities in the Maumee AOC

Maumee RAP Spring Summit
Olander Park Nederhouser Community Hall
May 4, 2011



Today's Presentation

- ▣ Maumee AOC TMDLs
- ▣ 319 Pre-/Post-project Evaluation Sampling
- ▣ Ottawa River Advisories
 - Contact status change and Consumption sampling
- ▣ Great Lakes Legacy Act Projects
 - Duck and Otter Crks, Swan Crk, and Maumee River
- ▣ Data Management and Delisting System
- ▣ FY 2011 GLRI Proposals

What Is a TMDL?


- ▣ **Total Maximum Daily Load:**
 - The maximum amount of a pollutant a waterbody can contain and still maintain water quality standards

background load
+ point source load
+ nonpoint source load
+ margin of safety
(allowance for future growth)

TMDL

Sampling to Assess a Watershed for TMDLs

- ▣ Physical habitat
- ▣ Water chemistry
- ▣ Sediment chemistry
- ▣ Biological community health
 - examine & count fish & aquatic insects



TMDL Status

(as of April 2011)

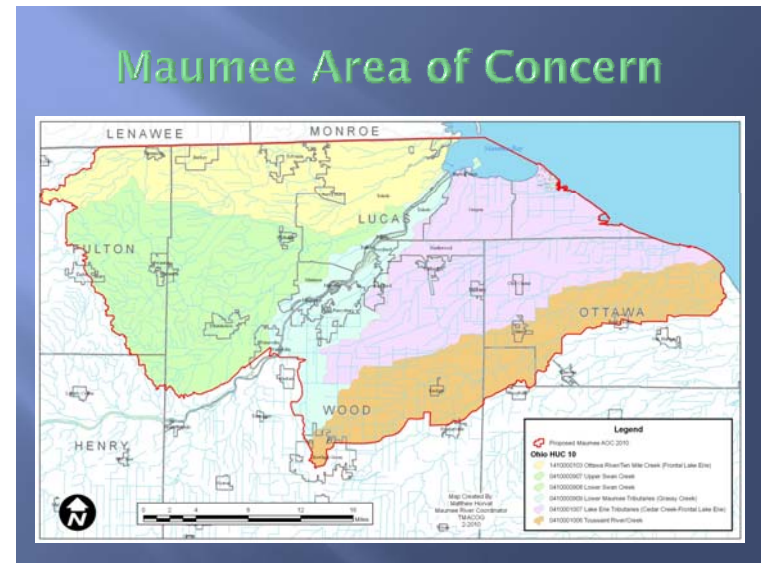
- 1st Cycle TMDL US EPA approved; 2nd underway**
- US EPA approved**
- Report Drafting phase**
- Load Analysis phase**
- Assessment phase**
- Monitored in 2011**

TMDL Reports

- ❑ Format of report has evolved in recent past
- ❑ More “user friendly” for local implementers
- ❑ Toussaint TMDL report is in original format
- ❑ Swan, Maumee Tribs, Lake Erie Tribs, and Ottawa will be/are in the new format
- ❑ Implementation chapter is shorter - more specific recommendations
- ❑ Easier to link impaired streams to relevant actions to restore/protect water quality

Example TMDL Implementation Table

10-Digit HUC (Location Description) 12-Digit HUC (Location Description) Sources (Causes)	Restoration Categories											
	Streambank & Riparian Restoration	Stream Restoration	Wetland Restoration	Conservation Easements	Dam Modification or Removal	Levee or Dike Modification or Removal	Removal of Mine Land Reclamation	Waste Storage Planning and Implementation	Education and Outreach	Agricultural Best Management Practices	Storm Water Best Management Practices	Regulatory Point Source Controls
04100003 07 Upper Swan Creek (Headwaters to Upstream Blue Creek)												
07 01 Ai Creek												
Channelization (habitat alteration, sediment)	x	x	x								x	x
HSTS (nutrients, bacteria)									x	x		x
Flow crop (nutrients, sediment)										x		
Village of Ai (nutrients, bacteria)												x
Savaton V/T/P (phosphorus, nitrates)												x
07 02 Paines Creek (Swan Creek)												
Channelization (habitat alteration, sediment)	x	x	x								x	x
HSTS (nutrients, bacteria)									x	x		x
Flow crop (nutrients, sediment)										x		
07 03 Lake Flum Swan Creek												
HSTS (nutrients, bacteria)									x	x		x
Flow crop (nutrients, sediment)										x		
04100003 08 Lower Swan Creek (Upstream Blue Creek to mouth)												
08 01 Upper Blue Creek												
Channelization (habitat alteration, sediment)	x	x	x								x	x
HSTS (nutrients, bacteria)									x	x		x
Bowson (nutrients, sediment)										x		



TMDLs in the Maumee AOC

- ▣ **Toussaint/Packer (assessed in 2003)**
 - Report approved by USEPA on September 2006
 - TMDLs for phosphorus, sediment and habitat
- ▣ **Swan Creek (assessed in 2006)**
 - Report approved by US EPA in January 2010
 - TMDLs for sediment, nitrate-nitrite, phosphorus and pathogens
 - Recommendations for improved habitat
- ▣ **Lower Maumee Tributaries (assessed in 2006)**
 - Report being drafted now
 - Reporting and information gathering via AOC Summits

TMDLs in the Maumee AOC

- ▣ **Toussaint/Packer (assessed in 2003)**
 - Report approved by USEPA on September 2006
 - TMDLs for phosphorus, sediment and habitat
- ▣ **Swan Creek (assessed in 2006)**
 - Report approved by US EPA in January 2010
 - TMDLs for sediment, nitrate-nitrite, phosphorus and pathogens
 - Recommendations for improved habitat
- ▣ **Lower Maumee Tributaries (assessed in 2006)**
 - Report being drafted now
 - Reporting and information gathering via AOC Summits



TMDLs in the Maumee AOC

- ▣ **Toussaint/Packer (assessed in 2003)**
 - Report approved by USEPA on September 2006
 - TMDLs for phosphorus, sediment and habitat
- ▣ **Swan Creek (assessed in 2006)**
 - Report approved by US EPA in January 2010
 - TMDLs for sediment, nitrate-nitrite, phosphorus and pathogens
 - Recommendations for improved habitat
- ▣ **Lower Maumee Tributaries (assessed in 2006)**
 - Report being drafted now
 - Reporting and information gathering via AOC Summits



TMDLs in the Maumee AOC

- ▣ **Toussaint/Packer (assessed in 2003)**
 - Report approved by USEPA on September 2006
 - TMDLs for phosphorus, sediment and habitat
- ▣ **Swan Creek (assessed in 2006)**
 - Report approved by US EPA in January 2010
 - TMDLs for sediment, nitrate-nitrite, phosphorus and pathogens
 - Recommendations for improved habitat
- ▣ **Lower Maumee Tributaries (assessed in 2006)**
 - Report being drafted now
 - Reporting and information gathering via AOC Summits



TMDLs in the Maumee AOC

- ▣ **Lake Erie Tributaries (assessed in 2008)**
 - Report currently being drafted by TetraTech using Ohio EPA collected data
 - Had a report on Watershed Characterization and Source Assessment at last Summit
 - Expect another report/update at Fall Summit (Nov. 18)
 - Public involvement via AOC Summits and demonstration sessions (TBA)
- ▣ **Tenmile Crk/Ottawa River (assessing in 2011)**
 - Study plan and sampling sites being finalized
 - TSD expected Spring '13; TMDL Rpt expected Winter '13

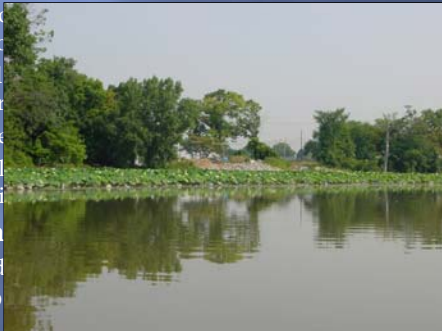
TMDLs in the Maumee AOC

- ▣ **Lake Erie Tributaries (assessed in 2008)**
 - Report currently being drafted by TetraTech using Ohio EPA collected data
 - Had a report on Watershed Characterization and Source Assessment at last Summit
 - Expect another report/update at Fall Summit (Nov. 18)
 - Public involvement via AOC Summits and demonstration sessions (TBA)
- ▣ **Tenmile Crk/Ottawa River (assessing in 2011)**
 - Study plan and sampling sites being finalized
 - TSD expected Spring '13; TMDL Rpt expected Winter '13



TMDLs in the Maumee AOC

- ▣ **Lake Erie Tributaries (assessed in 2008)**
 - Report currently being drafted by TetraTech using Ohio EPA collected data
 - Had a report on Watershed Characterization and Source Assessment at last Summit
 - Expect another report/update at Fall Summit (Nov. 18)
 - Public involvement via AOC Summits and demonstration sessions (TBA)
- ▣ **Tenmile Crk/Ottawa River (assessing in 2011)**
 - Study plan and sampling sites being finalized
 - TSD expected Spring '13; TMDL Rpt expected Winter '13



Ohio EPA 319 Grant Projects

- ▣ Ohio EPA samples pre-/post-project for 319 grants
- ▣ The type of sampling (habitat QHEI, bugs, fish, etc.) will depend on the type of project implemented
- ▣ **Pre-project sampling will be done this summer for:**
 - The Olander Park System - Palmer & Kimball Ditches
 - Toledo Botanical Gardens - Hill Ditch & Crosby Lakes
 - University of Toledo - mainstem Ottawa R. on Campus
- ▣ **Post-project sampling will be done this summer for:**
 - TMACOG - mainstem Ottawa River in Ottawa Hills



Ottawa River Consumption Advisory

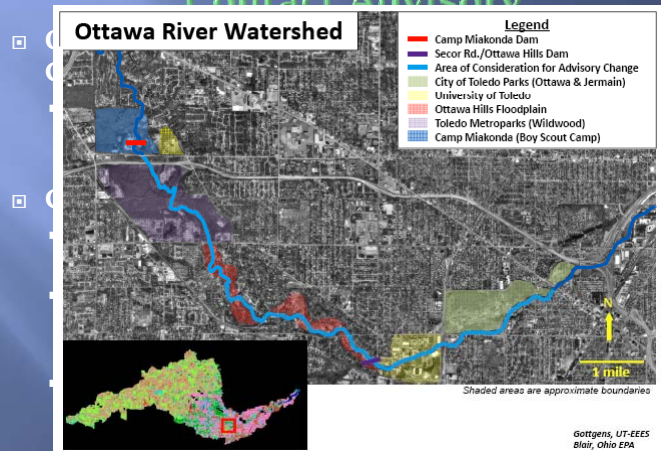
- **Evaluation of Consumption Advisory**
 - Ohio EPA will collect fish tissue samples to determine if the consumption advisory can be reduced or removed; this may require two consecutive years of data depending on results.
 - These samples will be in addition to the TMDL assessment sampling. They will be evaluated separately; however they may be collected at the same sampling locations.
 - The Consumption Advisory will be evaluated in conjunction with and issued by the Ohio Dept of Health.



Ottawa River Contact Advisory

- **On April 24, 2011 a portion of the Ottawa River Contact Advisory was rescinded**
 - Based on review of old data and the history of the advisory, ODH determined that the advisory should only extend from the mouth to the first I-475 bridge crossing (RM 8.6).
- **Confirmation of Contact Advisory removal**
 - Ohio EPA will collect sediment samples to confirm the removal of the contact advisory based on current data.
 - These samples will be in addition to the TMDL assessment sampling. They will be evaluated separately; however they may be collected at the same sampling locations.
 - The Contact Advisory will be evaluated in conjunction with and issued by the Ohio Dept of Health.

Ottawa River Contact Advisory



GLLA Site Characterization Sampling

- **Site Characterization sampling will be done by US EPA under the Great Lakes Legacy Act**
- **Duck and Otter Creeks (Mudpuppy II)**
 - Sampling started fall/winter 2010 at the confluence of the mouths of the Creeks and Maumee Bay
 - Sampling will conclude this month



R/V Mudpuppy II

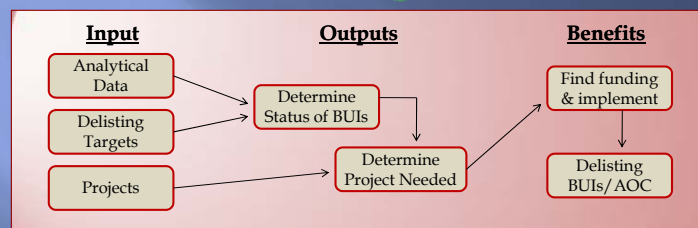
GLLA Site Characterization Sampling

- **Swan Creek (smaller boats/wading)**
 - Sampling will be conducted from Hawley St. to the mouth of the river (approximately 2 miles) in June
- **Maumee River (Mudpuppy II)**
 - Sampling will be conducted from near Walbridge Pk to I-280 Bridge (approximately 5 miles) in June
 - Additional sampling is tentatively planned from I-280 Bridge into Maumee Bay for summer 2012
 - The Maumee River projects do not intend to sample within the dredged shipping channel

Data Management and Delisting System

- US EPA has funded the development of a database to manage analytical data and guide the determination of projects needed for two AOCs: Maumee and Grand Calumet.
- Ohio EPA has requested GLRI funding to expand this system across Ohio's AOCs and to integrate it with the data/mapping capabilities of our website.
- The initial database is expected this year, with full integration (if funded) over the next few years.

Data Management and Delisting System



- Database and website (if funded) will be maintained by Ohio EPA with input from local groups, businesses, academia and citizens.
- Data will be able to be queried for specific streams, BUIs, or issues.
- It will enable our region to better track project needs and success while keeping the *Stage 2 Watershed Restoration Plan* up to date.

FY 2011 GLRI Applications



- US EPA released an RFA (request for applications) on Feb. 25 with a deadline of April 11.
- This RFA required more complete grant requests than last year's RFP (request for proposals), so US EPA could make awards more quickly.
- US EPA reports receiving 275+/- applications this year for the \$40 million that is available.
 - Last year they received 1200+ proposals for \$120 million
- 35 applications were identified by the Ohio Lake Erie Commission as having been submitted from/benefitting Ohio. (see handout)

FY 2011 GLRI Applications



- ▣ **Of those identified by OLEC, these four work toward restoration of the BUIs of the Maumee AOC:**
 - Ottawa River: Toxics Reduction in a Category 3 Wetland
 - Wolf Creek: Passive treatment wetland to improve nearshore health & reduce nonpoint source pollution
 - Wolf Creek: Reducing Fecal Bacteria
 - Wolf/Maumee/Ottawa: Green Infrastructure Project
- ▣ **Ohio EPA submitted 2 projects that will benefit the Maumee AOC:**
 - Brown Bullhead and DELT study
 - DMDS and Technical Support for GLLA/NRD initiatives

FY 2011 GLRI Applications



- ▣ **Other Projects from our Area:**
 - Long-term Phragmites Control through the Lake Erie CWMA (Cooperative Weed Management Area)
 - Rapid and Accurate eDNA Invasive Fish Species Detection Kit
 - Ohio Balanced Growth Endorsed Watershed Plan Implementation
 - GLAMS: Great Lakes Algae Monitoring System
- ▣ **ALSO – 2 TNC projects in the Maumee AOC were asked for full proposals from Sustain our Great Lakes (SOGL)**
- ▣ **Good luck to all who submitted!**

Questions

Cherie Blair
 Maumee RAP Coordinator
 Ohio Environmental Protection Agency
 419-373-3010
 Cherie.Blair@epa.state.oh.us

