

# *Great Lakes Legacy Act:*

## Proposed Maumee River AOC Site Characterizations

### Project Leads:

**Mark Loomis**

U.S. EPA - GLNPO

P: 312-886-0406

[loomis.mark@epa.gov](mailto:loomis.mark@epa.gov)

**Sara Goehl**

U.S. EPA - GLNPO

P: 312-886-0270

[goehl.sara@epa.gov](mailto:goehl.sara@epa.gov)



# Proposed Maumee River AOC Site Characterization

*100% Federally funded*

Characterizing 3 sites over the next 2 years

- **2011 Field Season**

- Swan Creek – lower portion to confluence
- Maumee River – lower reaches upstream from I-280 to Walbridge Park/ Clark Island

- **2012 Field Season**

- Maumee River – lower reach downstream from I-280 to harbor mouth



# Proposed Site Characterization Areas

Walbridge Park

Cullen Park





# Proposed Details/Specifics – Nothing finalized yet

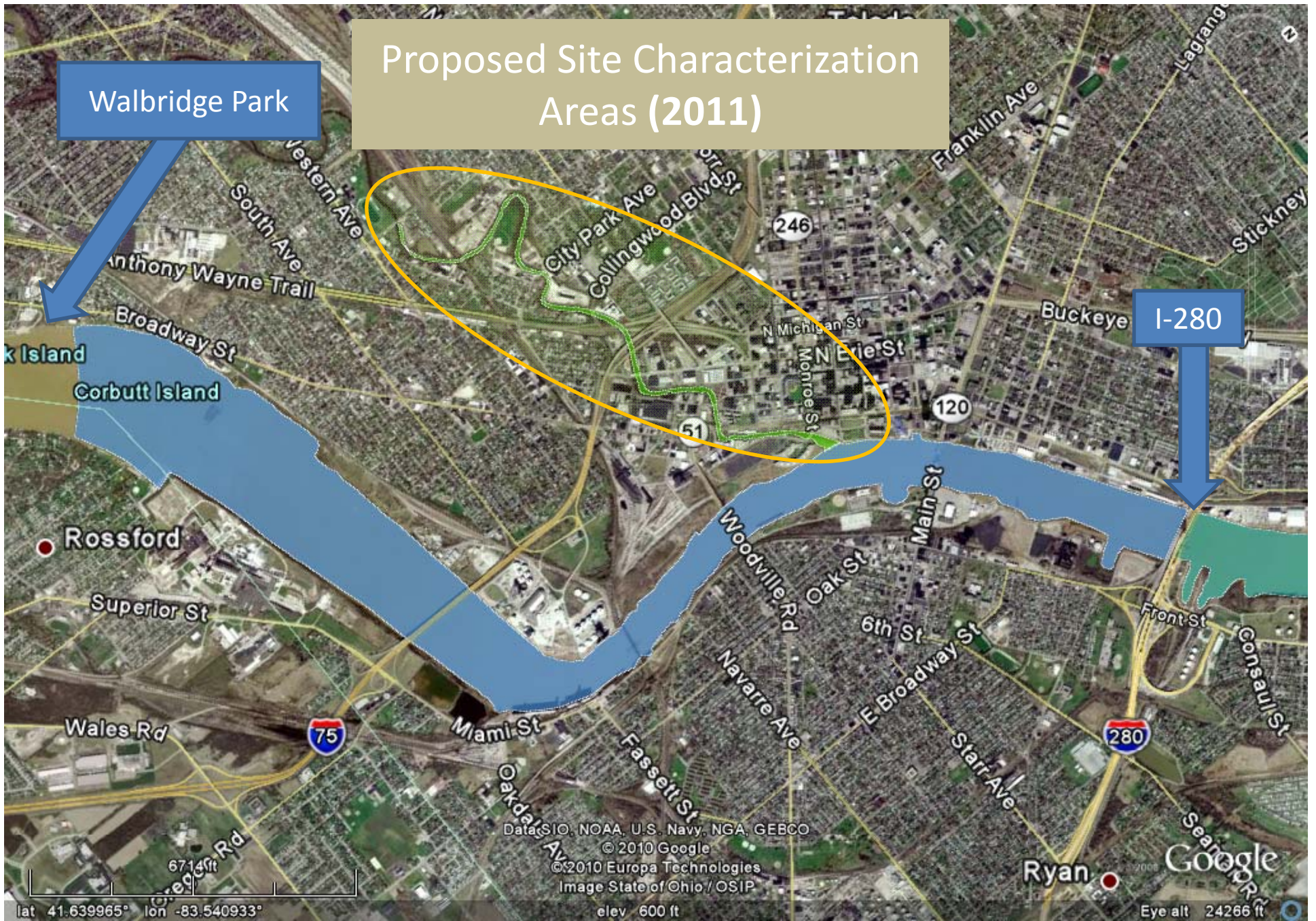
- Characterizations will examine chemical contamination, toxicity and physical characteristics of sediments along the river/stream bottoms.
- Excludes areas of active navigational dredging
- Could lead to development of GLLA remediation projects through downtown Toledo
- Allows for identification of habitat restoration in conjunction with GLLA remedies.





# Proposed Site Characterization Areas (2011)

Walbridge Park



Data SIO, NOAA, U.S. Navy, NGA, GEBCO  
© 2010 Google  
© 2010 Europa Technologies  
Image State of Ohio / OSIP  
elev 600 ft

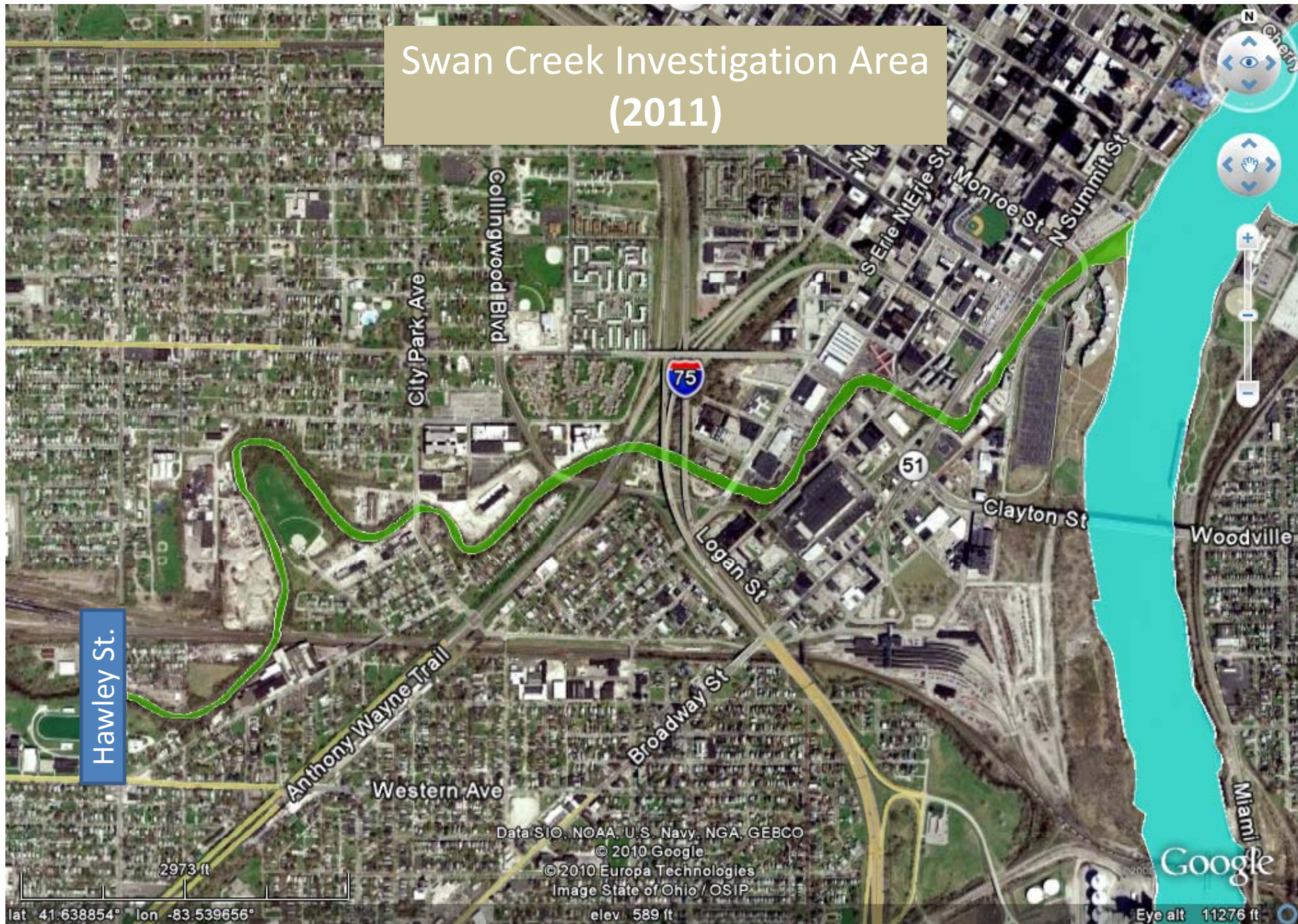
lat 41.639965° lon -83.540933°

Eye alt 24266 ft





# Swan Creek Investigation Area (2011)





# Proposed Site Characterization Areas (2012)



# Questions?

